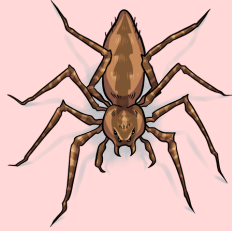


6

WATER SPIDER

(1 attack)



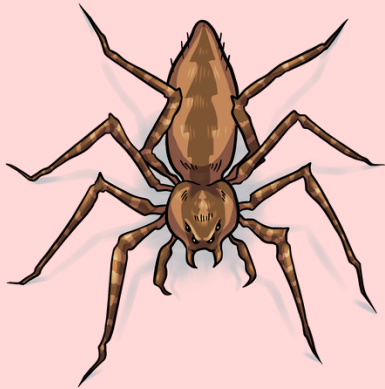
TURN ORDER

1. Reveal a pond event
2. Drop all enemy abilities and reveal new ones if they are empty
3. Choose to draw up to 2 items from the inventory deck
4. Drop cards you have equipped

10

BIG WATER SPIDER

(2 attacks)



TURN ORDER

1. Reveal a pond event
2. Drop all enemy abilities and reveal new ones if they are empty
3. Choose up to 2 items from the inventory to equip
4. Drop cards you have equipped

6

DRAGONFLY

(1 attack)



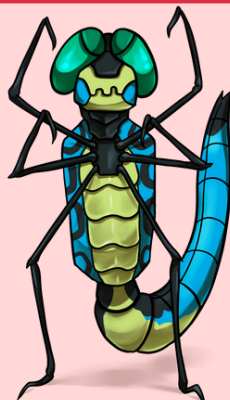
TURN ORDER

1. Reveal a pond event
2. Drop all enemy abilities and reveal new ones if they are empty
3. Choose up to 2 items from the inventory to equip
4. Drop cards you have equipped

10

BIG DRAGONFLY

(2 attacks)



TURN ORDER

1. Reveal a pond event
2. Drop all enemy abilities and reveal new ones if they are empty
3. Choose up to 2 items from the inventory to equip
4. Drop cards you have equipped

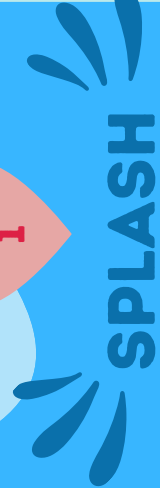
HOPPER

THE POND FROG



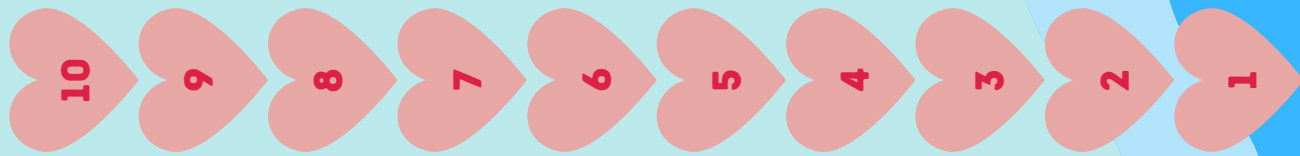
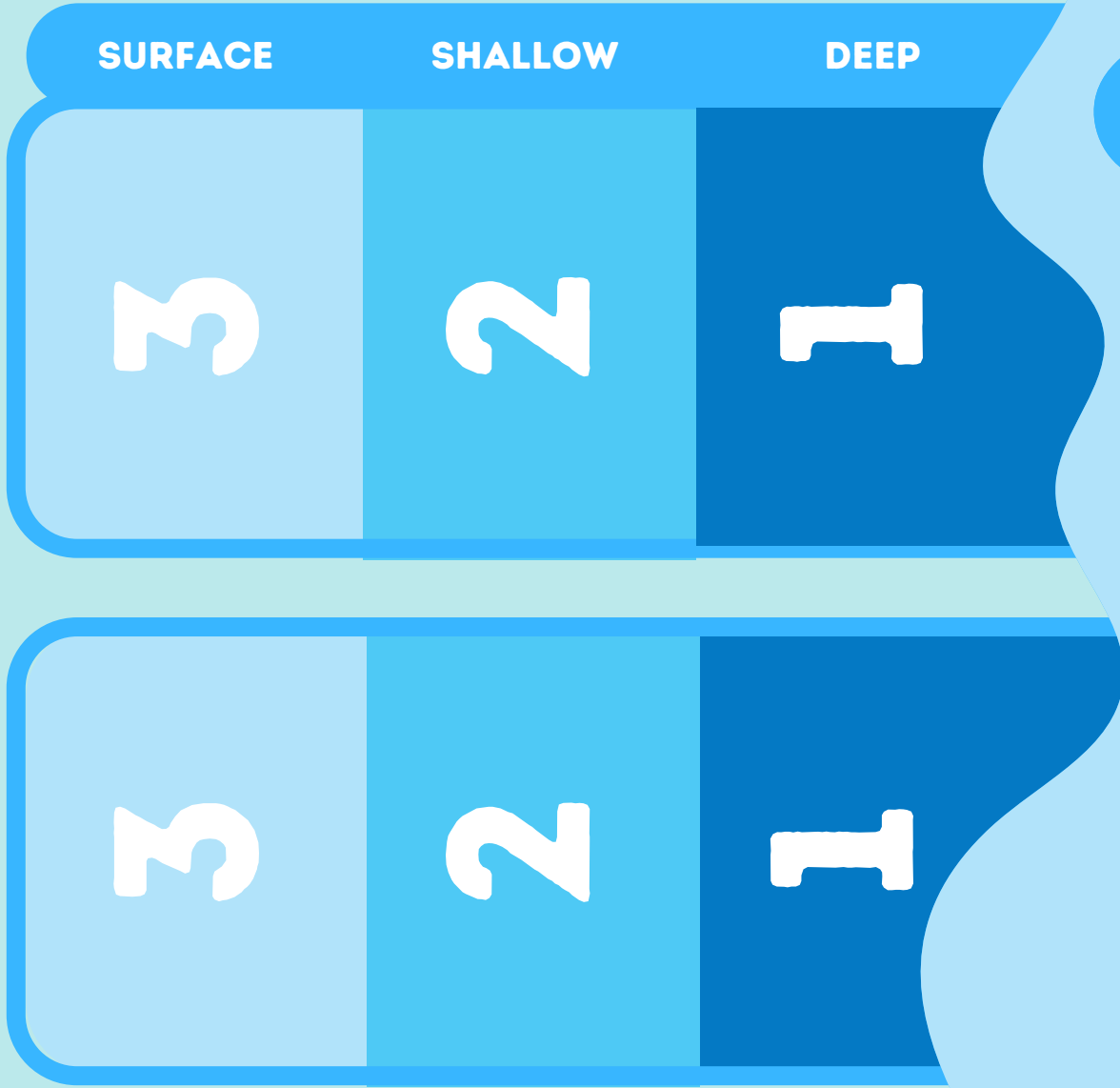
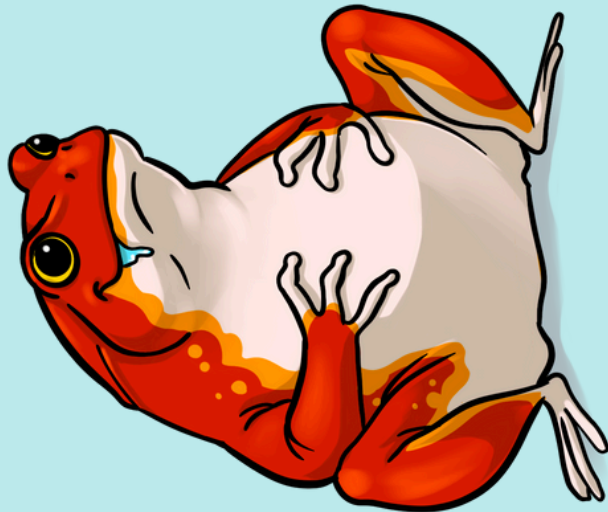
SURFACE	SHALLOW	DEEP
3	2	1
3	2	1

- 1
- 2
- 3
- 4
- 5
- 6
- 7
- 8
- 9
- 10



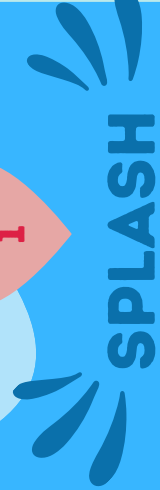
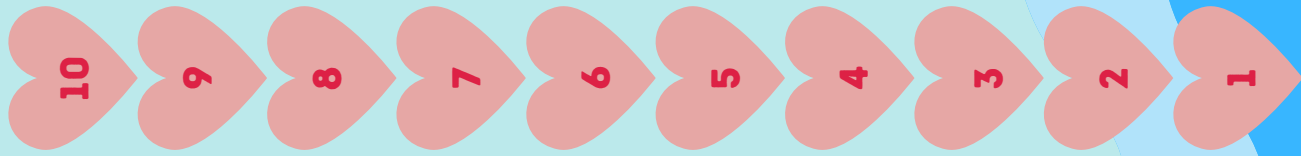
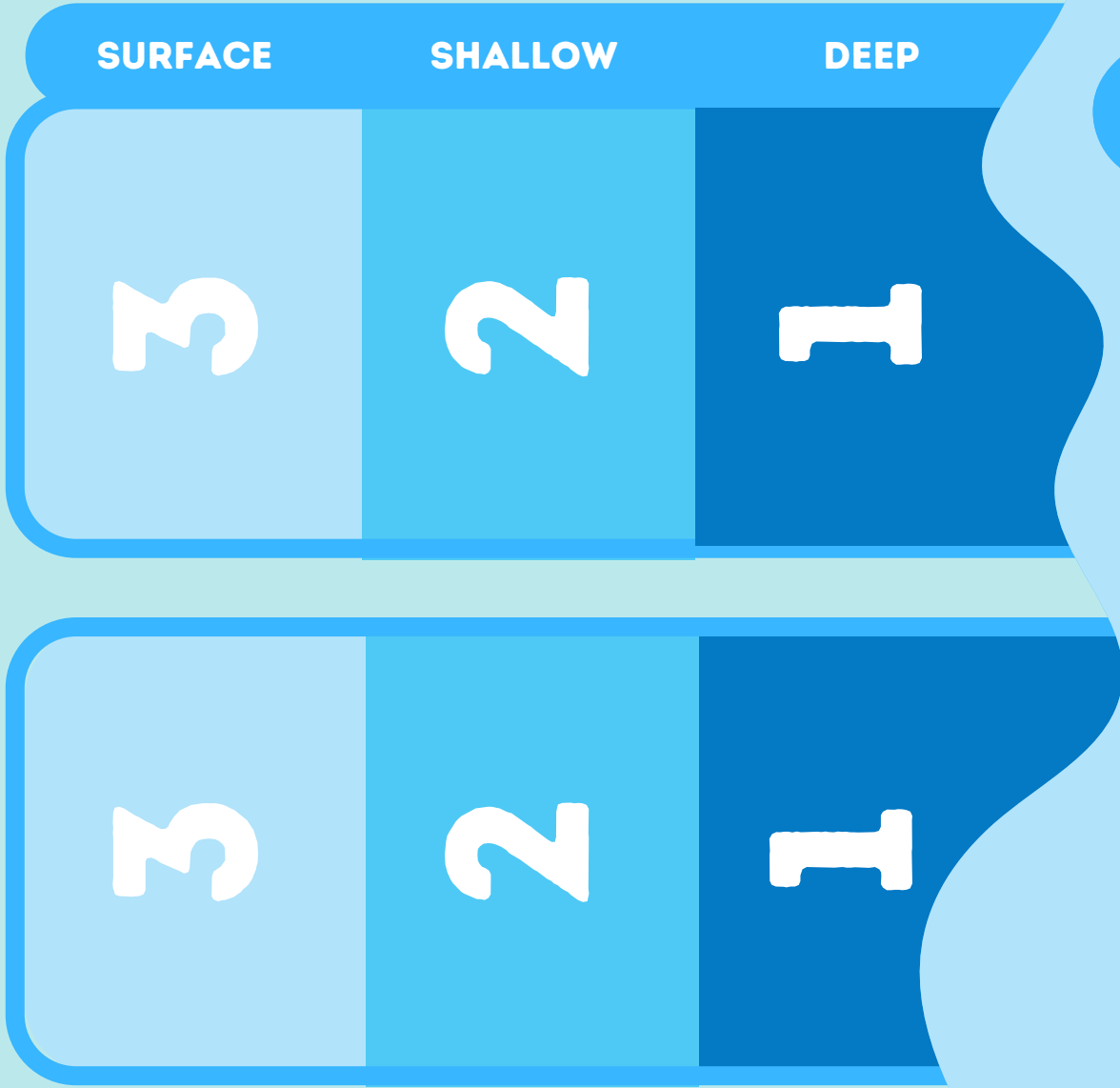
PESTO

THE TOMATO FROG



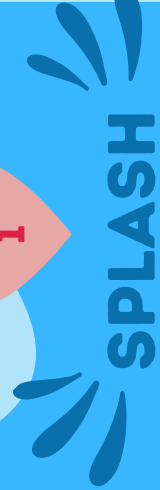
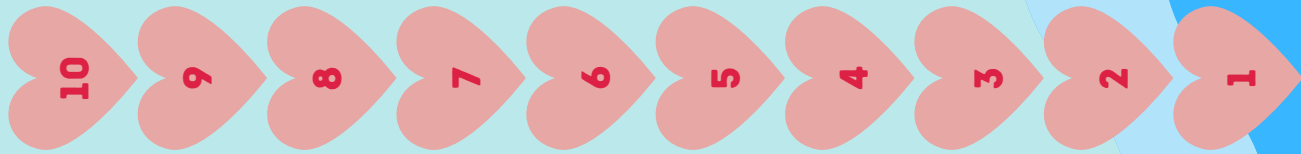
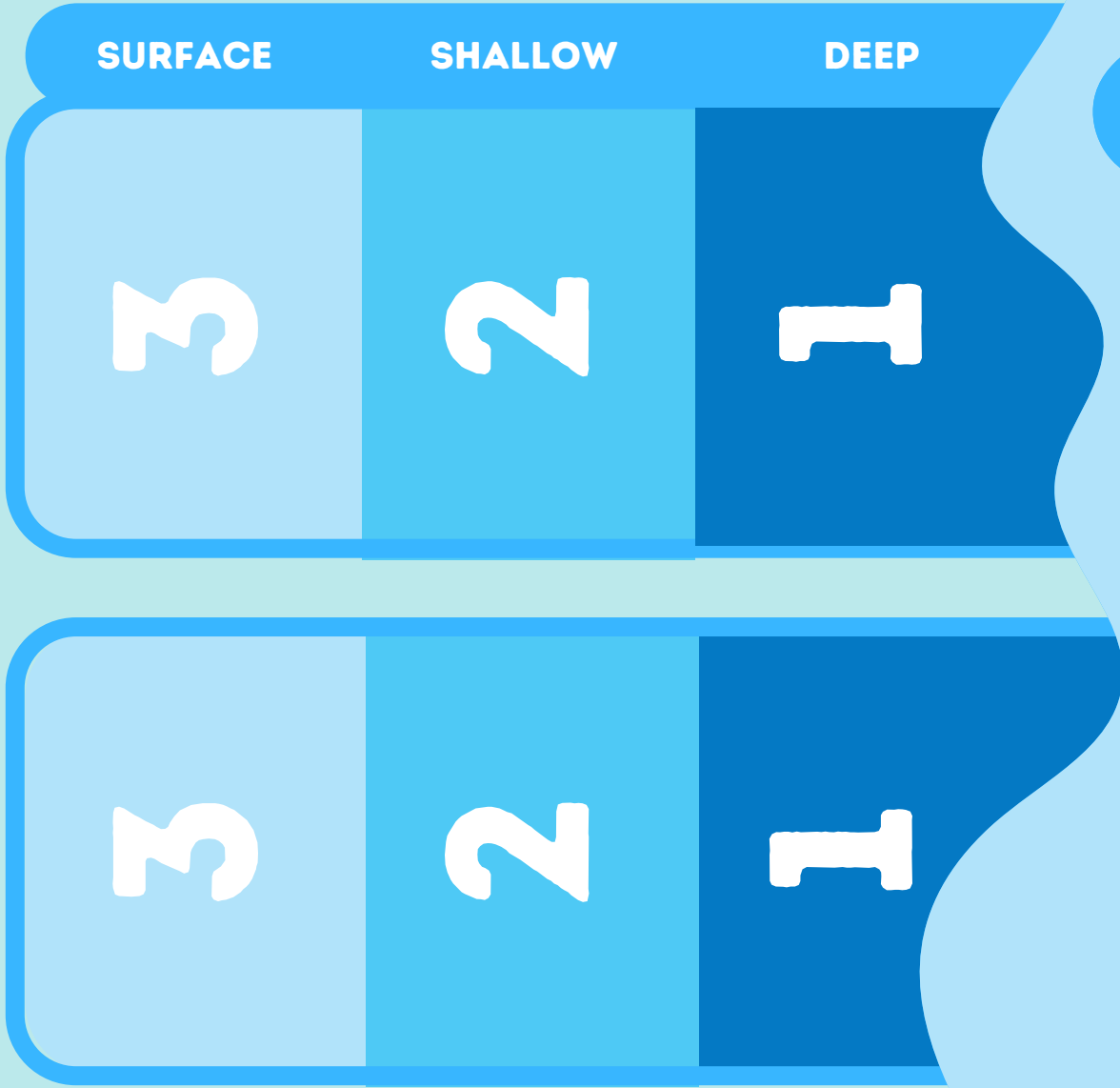
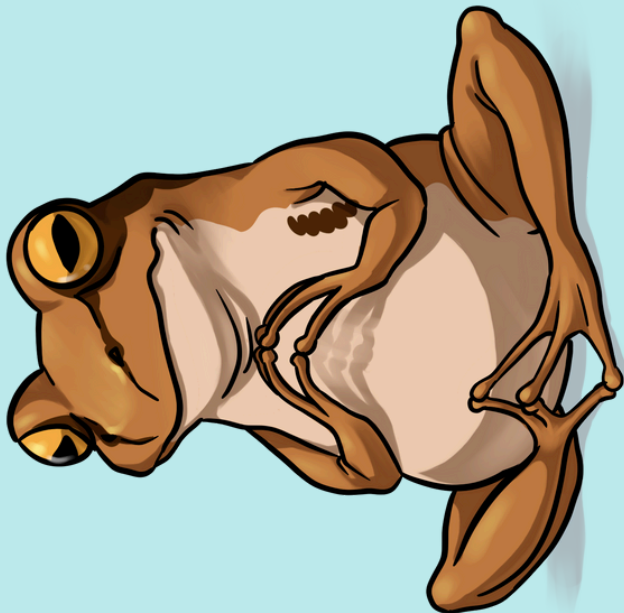
IVY

THE POISON
DART FROG



MAPLE

THE WOOD FROG



POND EVENT

**POND
EVENT**

DISCARD



PONDSTER

PONDSTER

PONDSTER ATTACKS

3

3

2

2

1

1

**PONDSTER
ATTACK**

DISCARD

**SHOP
DECK**



SHOP

SHOP

SHOP

**INVENTORY
DECK**

DISCARD

INVENTORY

